



# PUBLIC HOUSE

---

## FUNCTION PACK



Contact Us  
(03) 94210187  
[functions@publichouse.com.au](mailto:functions@publichouse.com.au)

---

Visit Us  
433-435 Church Street, Richmond  
Melbourne

---



## THE VENUE

Situated in the heart of Richmond, Public House is a stone's throw from Melbourne's CBD and the MCG. The venue has warmth with clean lines, neutral colours and mood lighting. Enter the Church Street bar into a comfortable freestanding cocktail space, leading upstairs to a rooftop terrace and outdoor bar. With a variety of areas, Public House is great for groups, birthdays, celebrations, private functions or corporate events.

The menu offers modern cuisine with share style small and large plates. Function platters and set menu options are also available for any group booking or private function.



For further information or to see the spaces, please contact our Function Coordinator

(03)94210187

functions@publichouse.com.au

www.publichouse.com.au



Contact Us  
(03) 94210187  
functions@publichouse.com.au



Visit Us  
433-435 Church Street, Richmond  
Melbourne

## THE SPACES

### TERRACE BAR AND COURTYARD

With a relaxed and casual atmosphere, this area is perfect for those after work drinks, romantic date or quiet gatherings. Heated throughout, this space can accommodate up to 100 guests. With its own private bar, this area can be booked for exclusive use Tuesday through to Thursday. Minimum spends will apply so please ask upon enquiry.



### DINING AREA

Take a seat, make yourself comfortable and enjoy a meal from the full a la carte menu in the dining area. This area can be reserved and accommodate up to 40 seats guests with a set-menu. Bookings of 14 guests or more are required to be on a 2, 3 or 4 course set menu.





## THE SPACES



### DOWNSTAIRS BAR

Keep it casual with a beverage and a few share plates perched at a high bar overlooking the hustle and bustle that is Church Street. The downstairs space can cater for up to 30 people surrounding a share table with stools. Reservations can be made any time throughout the week.

### FUNCTION ROOM

With a modern, versatile design, our function room can accommodate up to 55 guests for set menu dining and 120 guests for a stand up cocktail style function. With a private bar, space for a DJ and dance floor and the terrace courtyard directly opposite, this space is suited to a wide range of functions.





# COCKTAIL FUNCTIONS



## PLATTERS- 20 PIECES

<b>HOUSEMADE SAUSAGE ROLLS</b> w chunky relish	\$35
<b>VEGETARIAN RICE PAPER ROLLS</b> w sticky soy sauce	\$40
<b>ANTIPASTO PLATTER</b>	\$40
<b>CRISPY CHICKEN IN SUMAC</b> w aioli	\$45
<b>SALT AND PEPPER CALAMARI</b> lemon & yuzu mayonnaise	\$70
<b>RICOTTA AND SPINACH SAUSAGE ROLLS</b>	\$55
<b>CHICKEN SATAY SKEWERS</b> w peanut sauce	\$50
<b>SMOKED TROUT</b> w dill, creme fresh	\$50
<b>PEPPERED BEEF</b> w horseradish & olive tapenade	\$50
<b>HOUSEMADE PORK AND GINGER DUMPLINGS</b>	\$60
<b>GOURMET MINI PIES</b> (beef & red wine/lamb & rosemary/mushroom & gruyere)	\$60
<b>ASIAN PORK IN WONTON WRAPPER SPRING ROLL</b> w plum sauce	\$70
<b>PEKIN DUCK CREPES</b> cucumber, asian herbs, hoisin sauce	\$70
<b>TERYAKI BEEF SLIDERS</b>	\$80
<b>PORK SLIDERS</b>	\$80
<b>FRESHLY SUCKED OYSTERS</b> w champagne & chive dressing	\$70

## DESSERTS- 20 PIECES

<b>INDIVIDUAL STRAWBERRIES AND CREAM ROULADE</b>	\$80
<b>INDIVIDUAL CHOCOLATE FONDANT</b>	\$80
<b>CHEESE PLATTER</b>	\$50





## SET COURSE DINING

(Set menu requirement for all bookings of 14 or more on Friday and Saturday evenings) .

**2 COURSE \$45 P/P** (Entree & Main OR Main & Dessert)

**3 COURSE \$55 P/P** (Entree, Main & Dessert)

**4 COURSE \$65 P/P** (Entree, Main, Dessert & Cheese/ Tea & Coffee)

Entree, Dessert & Cheese are all served on share platters

### Entree (selection of 3 to be shared among guests)

Wagyu Beef Sliders, tomato, bacon, iceberg lettuce, relish on a brioche bun

Salt and Pepper Calamari, yuzu mayonnaise

Cured Salmon, herb aioli, micro herbs, red radish, shallot

Asian Pork in wonton wrappers with a plum sauce

Homemade Pork Dumplings, chilli, ginger, soy dipping sauce

Crispy Skin Chicken, aioli

### Main

300gm Porterhouse, potato fondant, watercress salad, red wine jus (gf)

Oven Roasted Barramundi, puy lentil tabouli, tomato and avocado salsa (gf)

Cider Braised Pork Belly, apple, witlof and walnut salad, housemade tonkatsu glaze (gf)

Ricotta Gnocchi, roasted pumpkin, walnuts, shaved parmesan, basil oil (v)

### Dessert

Chocolate Fondant

Strawberries and Cream Roulade



All dietary requirements will be catered for upon request with prior notice.

Function food orders are required a minimum of 7 days prior to the function date.

Final numbers must be confirmed 5 days prior to the function date. Your final bill will reflect the numbers confirmed at this point regardless of changes made thereafter.

Contact Us  
(03) 94210187  
functions@publichouse.com.au



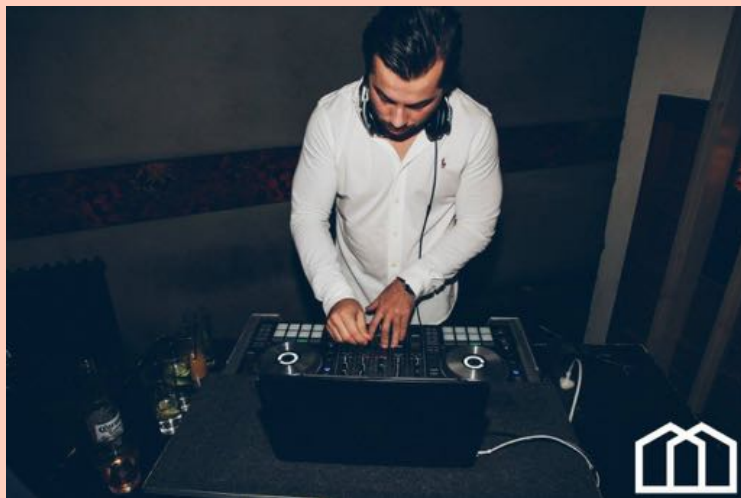
Visit Us  
433-435 Church Street, Richmond  
Melbourne

# THE DETAILS

## MINIMUM SPENDS

Function Room	Afternoon (until 5pm)	Evening (6pm-11pm)
Tuesday-Thursday	\$750	\$1500
Friday	\$1500	\$3500
Saturday	\$2000	Not Available
Sunday	\$1500	\$2000

Function Room	Afternoon (until 5pm)	Evening (6pm-12am)
Tuesday-Wednesday	\$1000	\$1500
Thursday	\$1500	\$2500
Friday	\$3000	\$5000



Due to the high volume of Christmas bookings our minimum spends are as above from 24th Nov-25th Dec.

### DECORATIONS



You are welcome to arrive early to decorate the function room for your events. Please consult with the Function Coordinator regarding the specifics of decorating. All decorations must be removed at the end of any function.

### CAKE



Public House offers dessert platters for private functions. Alternatively, there is a \$50 charge to have your own cake plated for your guests.

### MUSIC



In-house music is played throughout the venue. This music can be streamed into the function room upon request for private functions. Alternatively, you can have your own music played either through the in-house system or DJ. If you require a DJ please discuss this on enquiry.

## BOOKING CONFIRMATION

### DEPOSIT

A deposit of \$200 or \$500 is required at least 14 days prior to your event depending on the specific function details. Deposits are non-refundable for cancellations within 14 days of the function date.

**Please Note:** All bookings will remain tentative until a deposit has been made.





# CORPORATE FUNCTIONS

## CONFERENCE PACKAGES

### Coffee and tea on arrival

A selection of teas and coffee \$5 p/p

### Morning Tea

An assortment of pastries & tea/coffee \$10 p/p

### Lunch

\$12 lunch specials, a la carte or set menu (pre-ordering available)

### Afternoon Tea

An assortment of pastries and tea/coffee \$10 p/p

### Dinner

A la carte or set menu (pre-ordering available)

## DETAILS

The function room is an ideal space for business meetings, conferences and corporate events. The space can seat up to 50 guests in an amphitheatre style setting. Corporate functions can be booked Tuesday-Thursday.



Equipment included in the room hire:

- Whiteboard
- Microphone
- Projector
- Projector Screen
- Plasma TV

For any additional audiovisual or equipment requirements, please discuss upon making an enquiry.

